



The Department of Information and Technology Services
Research and Statistics
1001 Vandalay Drive
Frankfort, KY 40601
(502) 573-2350

KENTUCKY PRETRIAL SERVICES USE OF PRETRIAL RISK ASSESSMENT

PRETRIAL INTERVIEWS CREATED 7/1/09 – 3/31/2022

April 14, 2022

Statistics Request Overall Description

On April 7, 2022 Research & Statistics received a request for a report reflecting the use of pretrial risk assessment including but not limited to the Arnold Ventures Public Safety Assessment in Kentucky.

Kentucky Pretrial Services began using a locally developed risk assessment on July 1, 2009. This risk assessment tool was used through June 30, 2013, with the Arnold Ventures Public Safety Assessment (PSA) being adopted on July 1, 2013.

PRIM, the information system used by Pretrial Services, was queried for interviews conducted from July 1, 2009 through March 31, 2022. Case and bond information related to these interviews was queried in order to determine the release outcome for each interview.

The local risk assessment used from 7/1/09 through 6/30/13 required the participation of the defendant in order to calculate a risk level. This report excludes interviews from 7/1/09 to 6/30/13 in which the defendant declined to participate in the interview process or in which the defendant was released upon the disposition of all cases before the interview could be conducted since these interviews did not involve the risk assessment. All interviews 7/1/13 or later are included in the report since the PSA is completed using criminal history information and does not require participation in the interview process.

Statistical Report (22_PINS8009)

This report contains a total of six pages. The first page includes a bar chart displaying the number of pretrial interviews from each quarter with color indicating the release outcome for the interview.

The remaining pages present a cross-tabulation of the same information, in addition to the counts of distinct interviews, the tables include counts of distinct cases related to the reported interviews and counts of distinct defendants associated to the reported interviews.

Statistical Analysis Considerations:

- The statistics presented in the attached tables are a snapshot in time as of the date the data was queried: 4/14/2022.
- An individual defendant may be involved in multiple interviews during the time frame.
- Each interview may involve one or more cases and the same case may appear in one or more interviews over time.

KENTUCKY PRETRIAL SERVICES USE OF PRETRIAL RISK ASSESSMENT

PRETRIAL INTERVIEWS CREATED 7/1/09 – 3/31/2022

Statistical Report (22_PINS8009)

- Multiple bonds may be issued for a single case, and only the most recent bond for any case applicable to each interview is used to determine the release outcome.
- A defendant is reported as released from pretrial custody once release is indicated for all cases pertaining to the same pretrial interview.
- Counts of interviews count each interview only once. A single interview may have separate Release Decisions and Outcomes in Circuit and District Court. The same interview may appear in more than one subtotal within a table but will never be counted more than once in any cell, subtotal, or grand total. The District Court release outcome *Indicted* is excluded since it is always followed by another outcome in Circuit Court. The Circuit Court release outcome *Indictment Summons* is excluded since it represents a situation in which the defendant does not return to pretrial custody following a District Court release.

Data Variables Requested

Database	Data Variable	Description
PRIM	Interview Date Created	The date data was first entered reflecting a given pretrial interview.
	Release Outcome	<p>An indication of the manner in which a defendant was released from pretrial custody:</p> <p>Administrative Release: Defendants assessed as low or moderate risk; not charged with offenses identified as public safety concerns, contempt, probation violation, bail jumping, the violation of a protection order, and who have not previously violated a condition of pretrial release or failed to appear in court may be released on their own recognizance without a bond hearing. The use of this option was discretionary per judge as of 11/1/2015 and became mandatory statewide on 1/1/2017. The specific criteria for Administrative Release have changed several times since initial implementation, including many changes implemented in response to the COVID-19 pandemic.</p> <p>Non-Financial Release: Types of bond release in which no money or property must be posted prior to release.</p> <ul style="list-style-type: none">• Release on Recognizance• Surety• Unsecured• No Probable Cause• 60-Day Rule <p>Financial Release: Types of bond release in which money or property must be posted prior to release.</p>

KENTUCKY PRETRIAL SERVICES USE OF PRETRIAL RISK ASSESSMENT

PRETRIAL INTERVIEWS CREATED 7/1/09 – 3/31/2022

Data Variables Requested

		<ul style="list-style-type: none"> • 10% • Cash • Guaranteed Arrest Bond Certificate • Property • Partially Secured or Percent Bond • Stock and Bonds <p>60-Day Rule: The defendant is released after 60 days of pretrial custody on a District Court case in which no indictment to Circuit Court is filed during this time.</p> <p>Credit in Lieu of Fine: The defendant is released after a period of time has elapsed in which the time spent in custody is equivalent to the fine amount assessed for an alleged offense according to a set rate of equivalency.</p> <p>Detained Until Disposition: Without being given pretrial release, the defendant was released upon the disposition of all cases in this interview.</p> <p>Escape/Error: Indicates that a defendant was released in error or escaped.</p> <p>Transfer: Indicates that pretrial custody for all cases of a given jurisdiction related to this interview had pretrial custody end when the defendant was transferred to another secure facility or to a substance use treatment facility.</p> <p>In Custody: Indicates that the defendant is in pretrial custody for at least one case related to this interview.</p>
	Court Cases	The number of distinct court cases related to any of the reported interviews.
	Interviews	The number of distinct pretrial interviews. The pretrial interview is the central data unit used in PRIM, capturing any data related to a discrete period of pretrial custody for a single defendant, which may apply to one or more cases. A single defendant may have multiple pretrial interviews during any given period of time. Release decisions, release outcomes, and measurements of time in custody are captured separately for each jurisdiction (Circuit and District Court) for any interview including at least one case from each jurisdiction.
	Defendants	A count of distinct individuals related to at least one of the reported drug tests. Instances in which the same defendant is involved in more

KENTUCKY PRETRIAL SERVICES USE OF PRETRIAL RISK ASSESSMENT

PRETRIAL INTERVIEWS CREATED 7/1/09 – 3/31/2022

Data Variables Requested

		than one pretrial interview are identified when a Pretrial Officer connects the identification of the defendant in a pretrial interview to the identification entered for a previous interview involving the same defendant.
--	--	--

Disclaimer Associated with KCOJ/AOC Database(s) and Element(s)

RESEARCH AND STATISTICS DISCLAIMER for PRETRIAL SERVICES REQUESTS

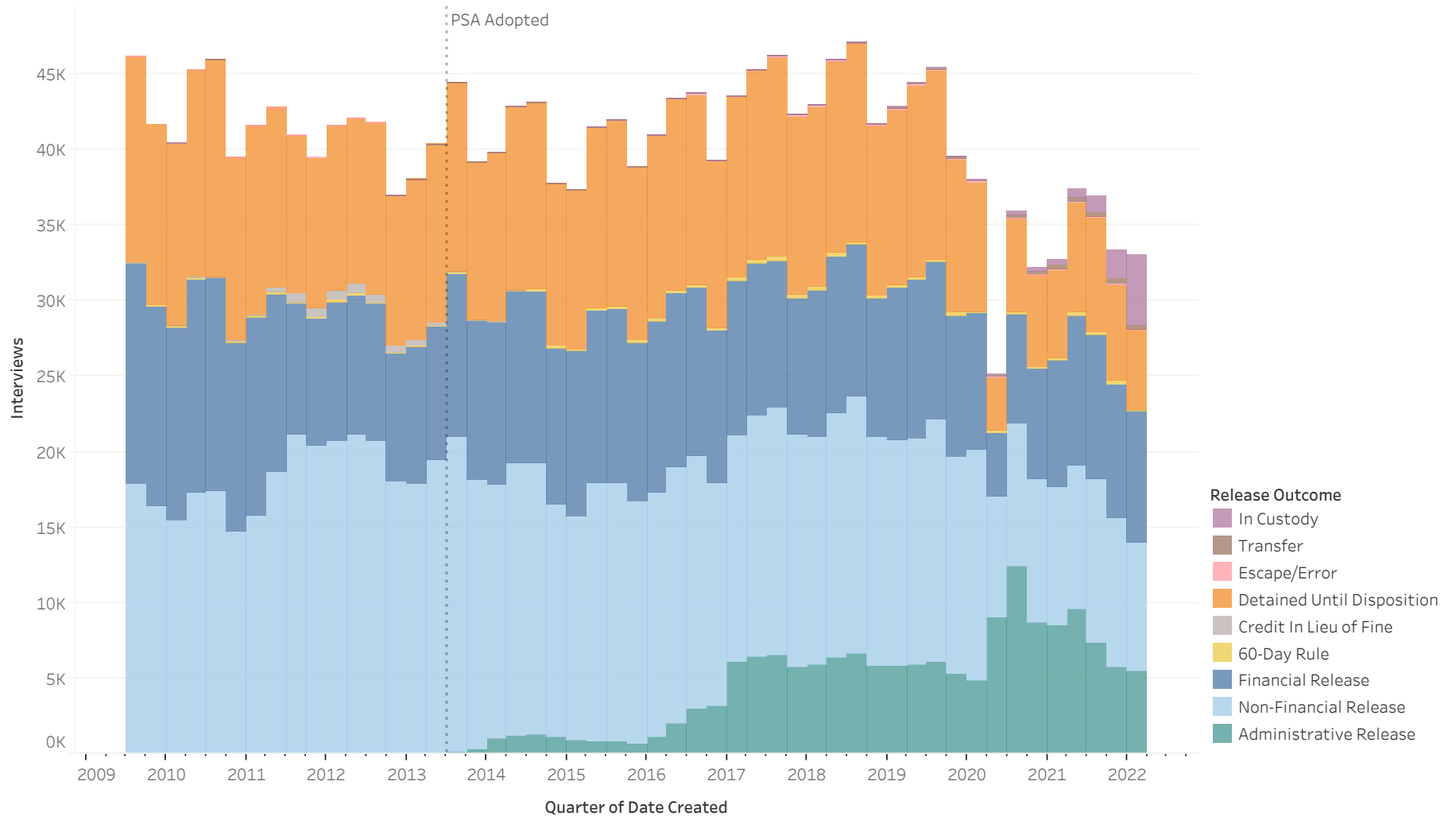
The data from this report is provided from the Pretrial Services program. Information received from the Pretrial Services program's electronic case management system (PRIM) is subject to change(s), reprogramming, modification(s) of format and availability at the direction of the Administrative Office of the Courts (AOC), and may not at any particular moment reflect the true status of court cases due to ordinary limitation(s), delay(s) or error(s) in the system's operation.



ADMINISTRATIVE OFFICE OF THE COURTS Research and Statistics

22_PINS8009

Pretrial Interviews Created 7/1/2009 - 3/31/2022



Statistical Analysis Considerations

* Data provided from the Pretrial Information Management System.

* A pretrial interview reflects a distinct period of pretrial custody from booking to release for a given defendant. A single defendant may be involved in multiple interviews over time and a single interview may involve one or more cases.

* Interviews with separate discrete release outcomes in different jurisdictions (Circuit and District Court) are counted separately for each release outcome but only once in the count of total distinct interviews.



ADMINISTRATIVE OFFICE OF THE COURTS
Research and Statistics

22_PINS8009

Pretrial Interviews Created 7/1/2009 - 3/31/2022

Year of Date Created	Quarter of Date Created		Release Outcome							Grand Total		
			Non-Financial Release	Financial Release	60-Day Rule	Credit in Lieu of Fine	Detained Until Disposition	Escape/Error	Transfer		In Custody	
2009	Q3	Cases	20,268	17,804	163	3	19,488	8			57,734	
		Interviews	17,782	14,618	110	1	13,651	1			45,500	
		Defendants	17,147	14,175	110	1	12,983	1			42,010	
	Q4	Cases	19,180	16,200	157		17,670				53,207	
		Interviews	16,426	13,147	108		11,918				40,980	
		Defendants	15,850	12,789	108		11,443				37,976	
	2010	Q1	Cases	17,962	15,827	202	10	18,182			1	52,184
			Interviews	15,384	12,815	140	4	12,086			1	39,748
			Defendants	14,863	12,453	140	4	11,628			1	36,899
Q2		Cases	20,104	17,231	185	8	20,495	12			58,035	
		Interviews	17,322	14,076	135	4	13,750	5			44,555	
		Defendants	16,636	13,625	135	4	13,022	5			40,733	
Q3		Cases	20,363	17,169	220	10	21,538	1	2		59,303	
		Interviews	17,404	14,037	144	5	14,417	1	1		45,250	
		Defendants	16,640	13,553	144	5	13,750	1	1		41,433	
Q4		Cases	17,336	15,332	214	25	18,439	22			51,368	
		Interviews	14,689	12,481	149	11	12,177	8			38,808	
		Defendants	14,206	12,108	149	11	11,680	8			35,984	
2011	Q1	Cases	18,647	16,264	211	88	19,029	2			54,241	
		Interviews	15,756	13,153	144	34	12,517	2			40,826	
		Defendants	15,223	12,774	144	34	11,997	2			37,871	
	Q2	Cases	21,796	14,471	292	469	17,768	11			54,807	
		Interviews	18,627	11,791	193	235	11,928	7			41,917	
		Defendants	17,866	11,449	192	234	11,408	7			38,580	
	Q3	Cases	24,687	10,886	171	1,169	15,588	30			52,531	
		Interviews	21,150	8,587	126	629	10,443	16			40,131	
		Defendants	20,209	8,375	126	625	9,989	16			36,762	
	Q4	Cases	24,183	10,657	159	1,136	15,028	40			51,203	
		Interviews	20,370	8,408	103	626	9,907	22			38,583	
		Defendants	19,480	8,170	103	623	9,543	22			35,489	

Table is continued on next page.

Statistical Analysis Considerations

- * Data provided from the Pretrial Information Management System.
- * A pretrial interview reflects a distinct period of pretrial custody from booking to release for a given defendant. A single defendant may be involved in multiple interviews over time and a single interview may involve one or more cases.
- * Interviews with separate discrete release outcomes in different jurisdictions (Circuit and District Court) are counted separately for each release outcome but only once in the count of total distinct interviews.

Run Date:
 4/14/2022
 Page 2 of 6



ADMINISTRATIVE OFFICE OF THE COURTS
Research and Statistics

22_PINS8009

Pretrial Interviews Created 7/1/2009 - 3/31/2022

Year of Date Created	Quarter of Date Created		Release Outcome								Grand Total	
			Administrative Release	Non-Financial Release	Financial Release	60-Day Rule	Credit In Lieu Of Fine	Detained Until Disposition	Escape/Error	Transfer		In Custody
2012	Q1	Cases		24,334	11,757	195	1,197	16,625	25			54,133
		Interviews		20,694	9,184	125	645	10,954	15			40,680
		Defendants		19,760	8,928	125	639	10,503	15			37,362
	Q2	Cases		24,915	11,652	226	1,266	16,483	32			54,574
		Interviews		21,161	9,158	146	632	10,943	19			41,202
		Defendants		20,218	8,909	146	630	10,482	19			37,697
	Q3	Cases		24,017	11,080	194	886	17,052	43			53,272
		Interviews		20,713	9,018	130	492	11,418	20			40,945
		Defendants		19,824	8,743	130	491	10,926	19			37,506
	Q4	Cases		21,044	10,613	166	769	14,876	21	2	1	47,492
		Interviews		18,010	8,438	113	436	9,937	16	1	1	36,157
		Defendants		17,347	8,182	113	435	9,539	16	1	1	33,450
2013	Q1	Cases		20,980	11,179	198	583	15,803	39	5		48,787
		Interviews		17,826	9,060	141	359	10,632	17	3		37,117
		Defendants		17,117	8,794	141	357	10,239	17	3		34,277
	Q2	Cases		22,307	10,638	219	277	17,224	26	5		50,696
		Interviews		19,410	8,815	141	183	11,845	13	1		39,605
		Defendants		18,581	8,561	140	182	11,265	13	1		36,327
	Q3	Cases	97	23,948	12,698	185	56	18,011	28	10		55,033
		Interviews	91	20,808	10,871	127	38	12,545	14	4		43,648
		Defendants	90	19,953	10,537	127	37	11,791	14	4		39,986
	Q4	Cases	311	20,678	12,354	184	22	15,069	32	4		48,654
		Interviews	302	17,795	10,469	122	17	10,498	14	2		38,425
		Defendants	296	17,072	10,134	122	17	9,959	14	2		35,384
2014	Q1	Cases	1,068	19,644	12,571	127	17	16,068	34	3		49,532
		Interviews	1,014	16,823	10,674	96	15	11,156	17	2		38,961
		Defendants	1,005	16,191	10,323	96	15	10,558	17	2		35,900
	Q2	Cases	1,184	21,176	13,192	147	9	17,379	38	6	3	53,134
		Interviews	1,144	18,132	11,300	101	4	12,179	19	2	1	42,039
		Defendants	1,135	17,380	10,941	101	4	11,396	19	2	1	38,296
	Q3	Cases	1,325	21,107	13,287	160		18,035	43	2		53,959
		Interviews	1,278	17,986	11,334	117		12,427	25	1		42,295
		Defendants	1,267	17,256	10,937	117		11,540	25	1		38,402
	Q4	Cases	1,080	18,037	12,261	174		15,625	37	5		47,219
		Interviews	1,047	15,431	10,366	124		10,776	20	2		36,972
		Defendants	1,046	14,847	10,048	124		10,158	20	2		33,943

Table is continued on next page.

Statistical Analysis Considerations

* Data provided from the Pretrial Information Management System.

* A pretrial interview reflects a distinct period of pretrial custody from booking to release for a given defendant. A single defendant may be involved in multiple interviews over time and a single interview may involve one or more cases.

* Interviews with separate discrete release outcomes in different jurisdictions (Circuit and District Court) are counted separately for each release outcome but only once in the count of total distinct interviews.

Run Date:

4/14/2022

Page 3 of 6



ADMINISTRATIVE OFFICE OF THE COURTS
Research and Statistics

22_PINS8009

Pretrial Interviews Created 7/1/2009 - 3/31/2022

Year of Date Created	Quarter of Date Created		Release Outcome							In Custody	Grand Total
			Administrative Release	Non-Financial Release	Financial Release	60-Day Rule	Detained Until Disposition	Escape/Error	Transfer		
2015	Q1	Cases	899	17,587	12,967	213	15,528	58	3		47,255
		Interviews	869	14,852	10,910	137	10,523	30	2		36,547
		Defendants	863	14,320	10,536	137	10,020	30	2		33,718
	Q2	Cases	818	20,098	13,456	235	17,748	69	16	9	52,449
		Interviews	802	17,070	11,443	148	12,044	36	6	4	40,632
		Defendants	796	16,310	10,996	148	11,322	36	6	4	36,930
	Q3	Cases	777	20,086	13,648	252	17,833	144	17	3	52,760
		Interviews	762	17,116	11,542	166	12,322	57	6	3	41,086
		Defendants	753	16,337	11,123	165	11,516	57	6	3	37,192
	Q4	Cases	663	19,079	12,638	272	17,097	78	14		49,841
		Interviews	652	16,041	10,511	174	11,420	42	6		37,995
		Defendants	645	15,301	10,130	174	10,739	42	6		34,497
2016	Q1	Cases	1,121	19,656	13,679	299	18,066	155	11	3	52,990
		Interviews	1,087	16,182	11,343	197	12,115	56	5	3	40,042
		Defendants	1,083	15,440	10,902	196	11,371	56	5	3	36,201
	Q2	Cases	2,023	20,522	13,823	300	18,631	198	13	13	55,523
		Interviews	1,964	17,008	11,512	205	12,610	96	5	3	42,380
		Defendants	1,935	16,161	10,999	205	11,775	95	5	3	37,904
	Q3	Cases	3,005	20,554	13,410	232	18,805	277	20	4	56,307
		Interviews	2,933	16,755	11,191	165	12,574	128	8	2	42,747
		Defendants	2,888	15,846	10,707	164	11,756	126	8	2	38,121
	Q4	Cases	3,217	18,144	12,206	219	16,603	194	21	5	50,609
		Interviews	3,146	14,733	10,121	150	11,036	93	7	4	38,332
		Defendants	3,111	14,004	9,741	150	10,475	92	7	4	34,501
2017	Q1	Cases	6,212	19,147	12,877	332	18,369	184	31	6	57,158
		Interviews	6,050	14,955	10,290	217	11,973	107	13	3	42,403
		Defendants	6,010	14,186	9,877	217	11,287	107	13	3	38,077
	Q2	Cases	6,562	20,132	12,524	344	18,927	232	24	8	58,753
		Interviews	6,441	15,886	10,133	237	12,442	120	7	7	44,137
		Defendants	6,368	14,950	9,718	234	11,724	120	7	7	39,215
	Q3	Cases	6,643	20,545	11,998	320	20,186	272	28	43	60,035
		Interviews	6,496	16,405	9,739	227	13,214	135	13	11	45,043
		Defendants	6,440	15,439	9,331	226	12,386	135	13	11	39,966
	Q4	Cases	5,878	19,508	11,389	279	17,883	254	19	9	55,219
		Interviews	5,719	15,369	9,074	200	11,813	117	9	5	41,112
		Defendants	5,666	14,505	8,715	199	11,104	116	9	5	36,776

Table is continued on next page.

Statistical Analysis Considerations

* Data provided from the Pretrial Information Management System.

* A pretrial interview reflects a distinct period of pretrial custody from booking to release for a given defendant. A single defendant may be involved in multiple interviews over time and a single interview may involve one or more cases.

* Interviews with separate discrete release outcomes in different jurisdictions (Circuit and District Court) are counted separately for each release outcome but only once in the count of total distinct interviews.

Run Date:

4/14/2022

Page 4 of 6



ADMINISTRATIVE OFFICE OF THE COURTS
Research and Statistics

22_PINS8009

Pretrial Interviews Created 7/1/2009 - 3/31/2022

Year of Date Created	Quarter of Date Created		Release Outcome								Grand Total
			Administrative Release	Non-Financial Release	Financial Release	60-Day Rule	Detained Until Disposition	Escape/Error	Transfer	In Custody	
2018	Q1	Cases	6,120	19,443	12,345	275	18,168	274	37	11	56,673
		Interviews	5,892	15,041	9,763	192	11,923	127	18	8	41,620
		Defendants	5,831	14,152	9,385	192	11,300	127	18	8	37,221
	Q2	Cases	6,482	20,994	13,075	355	19,143	256	75	22	60,402
		Interviews	6,292	16,298	10,309	248	12,700	114	27	9	44,638
		Defendants	6,162	15,318	9,869	247	11,952	112	27	9	39,489
	Q3	Cases	6,871	21,774	12,817	307	19,840	288	45	46	61,988
		Interviews	6,629	16,953	10,088	207	13,061	123	25	19	45,722
		Defendants	6,497	15,785	9,661	207	12,210	122	25	19	40,080
	Q4	Cases	5,988	19,666	11,626	286	17,493	240	58	16	55,373
		Interviews	5,796	15,132	9,169	196	11,280	133	34	12	40,539
		Defendants	5,718	14,260	8,807	193	10,729	131	34	12	36,241
2019	Q1	Cases	5,998	19,419	12,912	275	17,994	237	115	59	57,009
		Interviews	5,823	14,940	10,093	199	11,587	119	59	35	41,510
		Defendants	5,733	14,153	9,665	199	10,994	119	59	35	37,034
	Q2	Cases	6,014	18,809	13,320	307	18,963	209	212	56	57,890
		Interviews	5,871	14,950	10,542	215	12,588	120	111	30	43,113
		Defendants	5,763	14,095	10,101	215	11,828	119	111	30	38,188
	Q3	Cases	6,219	20,414	13,137	253	18,446	224	222	118	59,033
		Interviews	6,064	16,007	10,472	184	12,436	121	109	45	44,104
		Defendants	5,909	15,050	10,035	184	11,700	118	109	45	38,866
	Q4	Cases	5,373	18,448	12,044	285	14,968	165	182	118	51,583
		Interviews	5,240	14,361	9,392	203	10,132	94	111	55	38,334
		Defendants	5,137	13,626	9,024	200	9,630	93	111	55	34,431
2020	Q1	Cases	5,025	20,174	11,486	231	12,039	188	225	120	49,488
		Interviews	4,845	15,327	8,935	164	8,484	93	138	58	36,896
		Defendants	4,742	14,506	8,589	164	8,046	93	138	58	33,148
	Q2	Cases	10,647	10,099	5,293	150	5,167	87	210	194	31,847
		Interviews	8,997	7,988	4,269	118	3,519	51	103	99	24,375
		Defendants	8,516	7,644	4,141	118	3,413	51	103	99	22,052
	Q3	Cases	14,013	12,421	9,307	254	9,989	102	330	407	46,823
		Interviews	12,404	9,390	7,283	180	6,188	55	186	186	34,635
		Defendants	11,642	8,966	6,992	180	5,966	55	186	186	30,547
	Q4	Cases	9,699	12,912	9,595	188	9,619	112	377	543	43,045
		Interviews	8,601	9,559	7,303	121	6,104	58	198	239	31,014
		Defendants	8,393	9,077	7,007	121	5,893	58	198	239	28,009

Table is continued on next page.

Statistical Analysis Considerations

* Data provided from the Pretrial Information Management System.

* A pretrial interview reflects a distinct period of pretrial custody from booking to release for a given defendant. A single defendant may be involved in multiple interviews over time and a single interview may involve one or more cases.

* Interviews with separate discrete release outcomes in different jurisdictions (Circuit and District Court) are counted separately for each release outcome but only once in the count of total distinct interviews.

Run Date:

4/14/2022

Page 5 of 6



**ADMINISTRATIVE OFFICE OF THE COURTS
Research and Statistics**

22_PINS8009

Pretrial Interviews Created 7/1/2009 - 3/31/2022

Year of Date Created	Quarter of Date Created		Release Outcome								Grand Total	
			Administrative Release	Non-Financial Release	Financial Release	60-Day Rule	Credit In Lieu of Fine	Detained Until Disposition	Escape/Error	Transfer		In Custody
2021	Q1	Cases	9,575	12,434	10,996	240		9,225	119	433	919	43,941
		Interviews	8,444	9,183	8,394	164		5,818	67	252	384	31,687
		Defendants	8,269	8,705	8,029	164		5,631	67	250	384	28,554
	Q2	Cases	10,658	12,973	12,609	324		11,236	133	471	1,428	49,832
		Interviews	9,499	9,595	9,861	237		7,254	73	277	642	36,209
		Defendants	9,233	9,124	9,414	237		6,958	72	277	642	32,276
	Q3	Cases	7,855	14,554	12,247	315		11,642	147	477	2,360	49,597
		Interviews	7,339	10,835	9,531	221		7,557	81	281	1,086	35,655
		Defendants	7,207	10,215	9,135	220		7,259	81	280	1,086	31,823
	Q4	Cases	5,955	13,215	11,380	310		9,408	121	443	3,950	44,782
		Interviews	5,729	9,894	8,836	221		6,377	69	291	1,874	32,246
		Defendants	5,627	9,385	8,530	221		6,111	69	291	1,874	29,210
2022	Q1	Cases	5,671	11,055	10,911	41		7,059	65	363	8,899	44,064
		Interviews	5,444	8,518	8,763	30		5,275	34	250	4,718	32,222
		Defendants	5,334	8,177	8,421	30		5,055	34	249	4,712	29,262
Grand Total	Cases	171,046	980,575	644,838	11,842	8,000	827,550	5,606	4,536	19,374	2,673,367	
	Interviews	160,706	806,042	522,612	8,158	4,370	554,473	2,820	2,576	9,547	2,021,319	
	Defendants	135,556	474,929	342,092	7,524	4,194	285,343	2,726	2,490	9,537	810,274	

Statistical Analysis Considerations

* Data provided from the Pretrial Information Management System.

* A pretrial interview reflects a distinct period of pretrial custody from booking to release for a given defendant. A single defendant may be involved in multiple interviews over time and a single interview may involve one or more cases.

* Interviews with separate discrete release outcomes in different jurisdictions (Circuit and District Court) are counted separately for each release outcome but only once in the count of total distinct interviews.

Run Date:

4/14/2022

Page 6 of 6