



KENTUCKY JUDICIAL COMMISSION ON **MENTAL HEALTH**

Kentucky Court of Justice



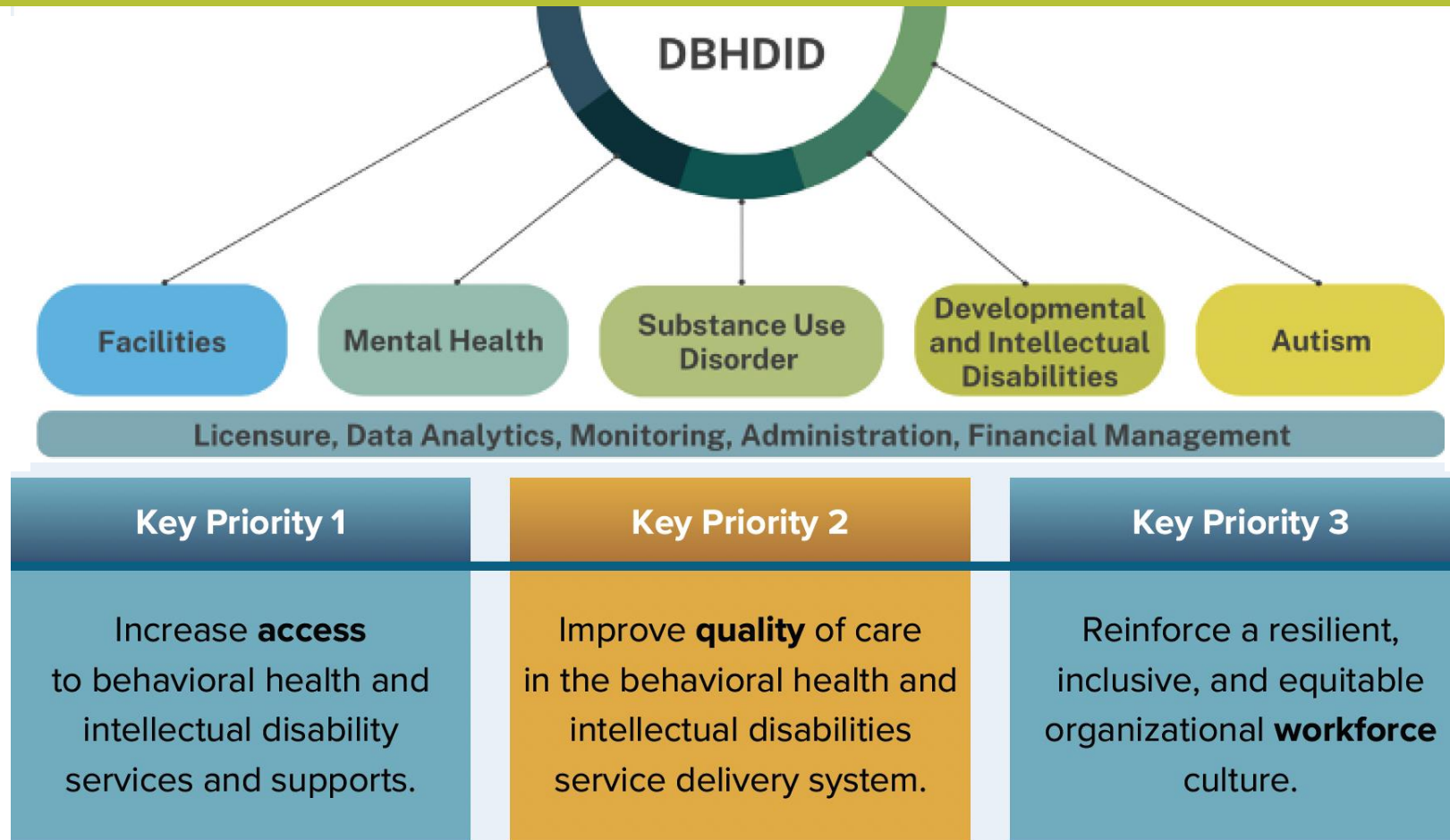
CABINET FOR HEALTH
AND FAMILY SERVICES

BHDID Strategic Initiatives

Katherine Marks, PhD
David Susman, PhD

June 13, 2025

Mission: Promote health, well-being, and resilience for all; facilitate recovery for people affected by mental illness and substance use; and support people with developmental and intellectual disabilities.



Statewide Impact

148,793 Kentuckians
with a mental health issue, substance use disorder,
or a developmental or intellectual disability
were served by **Community Mental Health Centers**
(CMHCs)

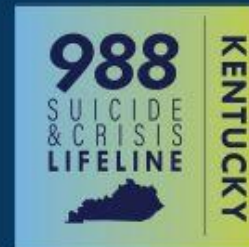
7,303 clients were served by
residential facilities



27%



increase in
utilization of
988 Suicide
and Crisis
Lifeline



9.8%



decrease in
overdose
deaths
(CY 2023)

Crisis Response

149,883

calls, texts, and chats



addressed through CMHC crisis lines

70,128

Kentuckians contacted **988**



more than **90%** of calls
made by Kentuckians are
answered in Kentucky

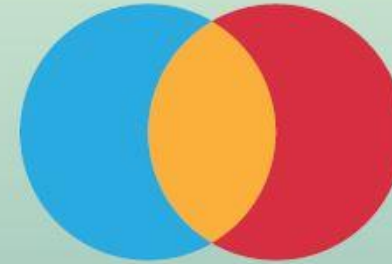
Adult Mental Health

Comprehensive Services for Adults with Serious Mental Illness (SMI)



Olmstead Housing Initiative

meets the housing needs of persons with SMI who are transitioning from long-term stays in an institution, or who are at risk of institutionalization



14 Assertive Community Treatment Teams served **660** clients with SMI in over **98** counties



13,364 individuals with SMI received Peer Support Services to prevent an institutional level of care

672 individuals received Projects for Assistance in Transition from Homelessness (PATH) services



InReach workers at CMHCs statewide engaged with more than

1,631 individuals
across **82** facilities



like personal care homes, hospitals, shelters, jails - providing support on independent living and housing options, as well as referrals to other programs based on individual needs

Forensic Services

1,264 forensic
evaluations conducted
under KRS 504

→ 1,050 felony-level evaluations
214 misdemeanor-level evaluations



Civil Commitments

202A Involuntary hospitalization of a person with a mental illness → 10,776 evaluations conducted by CMHCs

202B Involuntary admission of a person with an intellectual disability → Reduced the number of people diverted to ICF institutionalization by **52.5%**

202C Petition for involuntary hospitalization → KCPC received **11** new 202C patients

Behavioral Health Jail Triage program provides screening for suicide risk, recommends interventions, and arranges follow-up assessments with local mental health providers

CMHCs
provided

23,110

mental health
consultations



to local jails



The **Adult Diversion from the Justice System** program served **9,786** adults through CMHCs as a result of a court order

1915(i) RISE

- **R**ecovery
- **I**ndependence
- **S**upport
- **E**ngagement

1915(i) RISE

- **R**ecovery
- **I**ndependence
- **S**upport
- **E**ngagement

RISE reflects the initiative's focus; Helping individuals RISE above their challenges through services that promote recovery, independence, and community engagement.

Enhance
Community
Based Supports

Foster Participant
Independence

Prevent
Institutionalization

Promote Person-
Centered Care
Approach

1915(i) RISE



1. Supervised Residential Care



2. In-Home Independent Living Supports



3. Housing & Tenancy Supports



4. Supported Employment



5. Supported Education



6. Transportation



7. Medication Management



8. Planned Respite for Caregivers



9. Assistive Technology



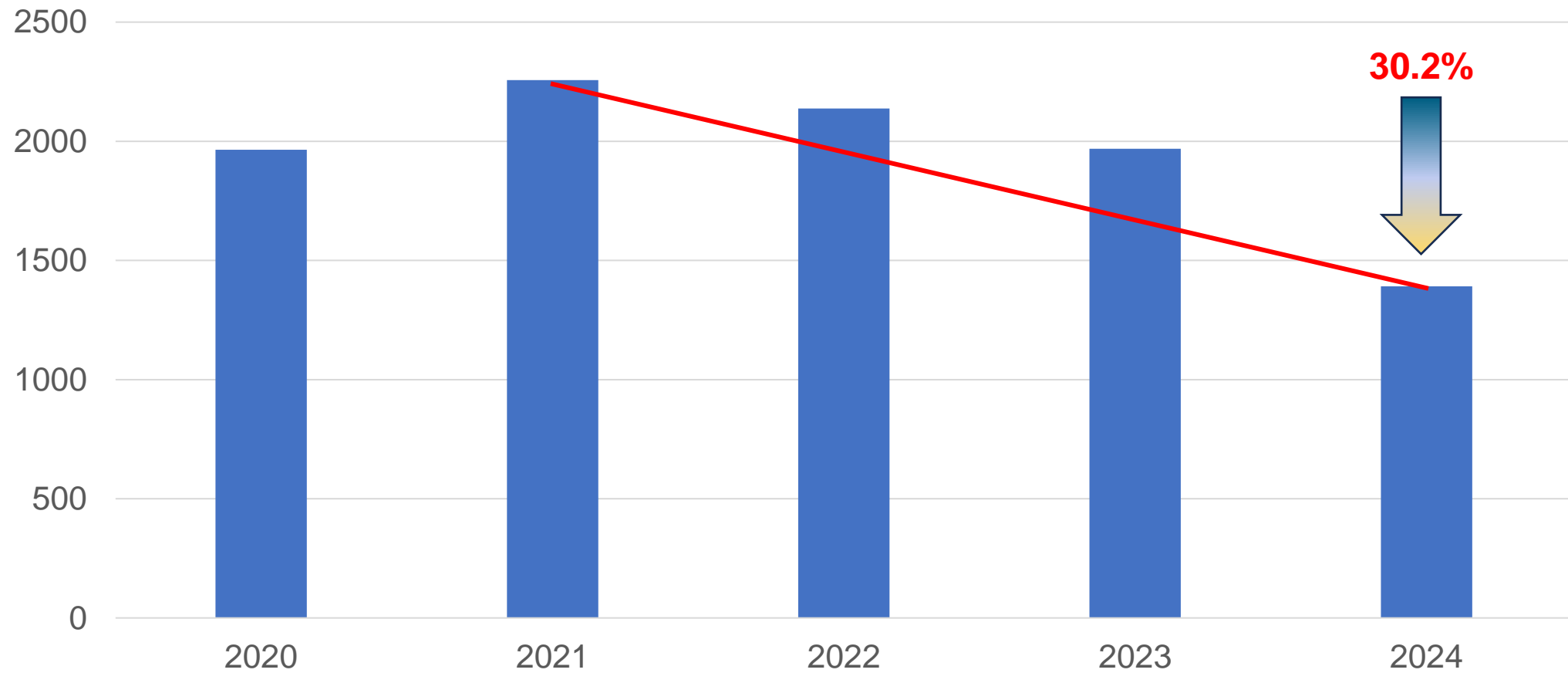
10. Case Management

1915(i) RISE Eligibility



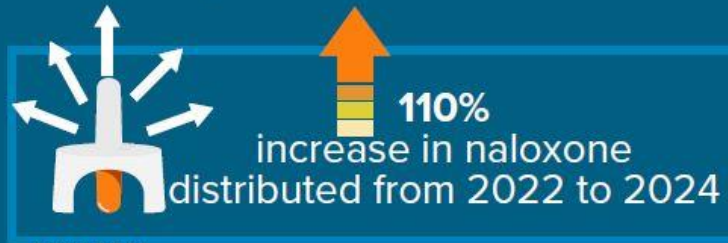
- Adults age 18+ and enrolled in Kentucky Medicaid
- Diagnosed with Serious Mental Illness
- Facing difficulty with housing, work, or daily functioning
- May also have co-occurring addiction

Total Drug Overdose Deaths, 2020 - 2024



Substance Use Disorder

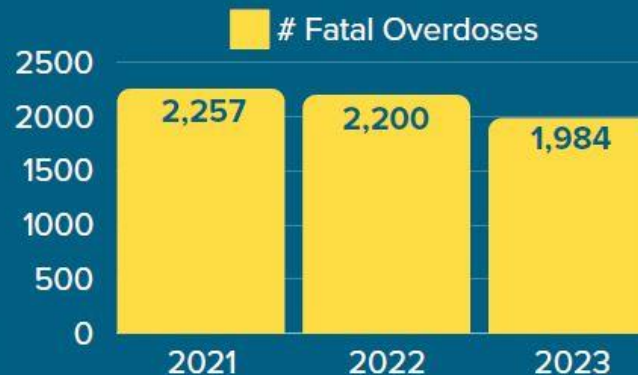
The **Kentucky Overdose Response Effort (KORE)** aims to reduce overdose deaths by expanding and sustaining a comprehensive, equitable, recovery-oriented system of care.



50% of individuals in a KORE-funded substance use treatment program received medications for opioid use disorder (MOUD)



32,681 individuals received treatment and/or recovery services through KORE-funded initiatives



9.8%
decrease in
number of fatal
overdoses

SUD Provider Licensure and Certification

10%
increase in



Alcohol
and Other
Drug Entity
(AODE)
Licenses

40%
increase in
DUI
Programs



15%
increase in



Narcotic
Treatment
Programs

Certification of Recovery Housing

198 residencies
(2,860 beds)
certified



across
33 counties



by the
Kentucky
Recovery
Housing
Network



Comprehensive, Continuous, Integrated System of Care

Is our system designed to inspire hope for people with complex needs?

- Customer-oriented, continuous quality improvement
- Welcoming integrated access & engagement
- Peer/family support expansion
- Integrated crisis system redesign
- Integrated SUD system redesign
- Integrated Adult and Child MH system redesign
- Utilization management redesign
- “Treatment & care coordination” redesign
- Managing “high utilizers”

Assisted Outpatient Treatment (AOT; "Tim's Law")

- Civil legal procedure by which a court can order an individual with serious mental illness (SMI) to follow a treatment plan in the community.
- Signed into law in 2017 (unfunded)
- SAMHSA Pilot Grant 2020 – 2024 (\$4M)
- State general funding began in FY 2023; expanded each subsequent year (\$3M FY 2026)
- BHDID has AOT Program Administrator to coordinate statewide expansion



AOT Outcomes: Federal SAMHSA Grant 2020-2024

AOT Research Highlights



139

total clients
served
at 12 months



90%

of consumers report
feeling capable of
handling daily life
n=39



87%

report getting
along with family
n=38



75%

reduction in
homelessness
n=4



95%

reduction in
hospitalizations
for mental health
n=45



100%

reduction in inpatient/
detox
n=4



100%

reduction in jail
n=5



75%

reduction in ER visits
for mental health
n=12



100%

reduction in
arrests
n=3

Current AOT Courts (CMHC Regions)

- Jefferson (Seven Counties)
- Hardin, Grayson, Nelson (Communicare)
- Fayette, Scott, Bourbon, Woodford (New Vista)
- Kenton (NorthKey)
- Mason (Comprehend)
- Daviess (River Valley)
- Christian, Muhlenberg (Pennyroyal)
- McCracken (Four Rivers)
- Warren (Lifeskills)
- Harlan (Cumberland River)
- Perry (Kentucky River)

These counties
comprise 45% of
the state's
population.

AOT Medicaid Cost Savings

Monthly Healthcare utilization dropped by:



39% During AOT
48% After AOT

Monthly Hospitalizations declined by:



53% During AOT
67% After AOT

**Average Medicaid
cost savings:**

**\$1326 per month per
person during AOT**

**\$1106 per month per
person after AOT**

Monthly Medicaid costs decreased by:



66% During AOT
55% After AOT

Participant Snapshot:

Age: 76.1% were under age 44; largest group: 35-44 (34.3%)

Gender: More males (44.8%) than females (35.8%)

Diagnosis: Schizophrenia: 56.7% |
Schizoaffective Disorder: 17.9% | Bipolar Disorder: 14.9%

Seth's Law

- Endorsed by Judicial Commission on Mental Health
- Became law in 2024
- Changed KRS 504 competency evaluation to an outpatient modality unless inpatient assessment is recommended
- Reduced KCPC wait list from over 400 to less than 100
- BHDID implemented a statewide training program for all KRS 504 evaluators

Future Directions

- **Forensic Assertive Community Treatment (FACT)** teams pilot – support for SMI individuals with justice system involvement
- **Crisis Intervention Training (CIT)** for police and firefighters – curriculum update
- **Jail Mental Health Services Work Group** – assessment and recommendations to enhance jail behavioral health services
- **Alternative transportation models for KRS 202A** - to supplement law enforcement transports during civil commitment process

Katie.Marks@ky.gov

David.Susman@ky.gov